



APHIS Animal Care Emergency Programs

ESF#11- Safety and Well-Being of Pets




United States Department of Agriculture
Animal and Plant Health Inspection Service



Objectives


1. List why the safety and well-being of pets mission is important
2. Describe how the NRF assigns responsibility for animal issues
3. Describe state and local responsibilities
4. Describe APHIS Animal Care roles in supporting ESF#11
5. Describe APHIS Animal Care missions




Animal Emergency Management



USDA APHIS Animal Care



- **Enforcement of the**
 - Animal Welfare Act
 - Horse Protection Act.
- **National Response Framework**
 - Emergency Support Function #11:
safety and well-being of pets mission



Who is Animal Care?

Specialists

- Bio-physiology
- Elephants
- Non-Human Primates
- Big Cats
- Marine Mammals

Staff Officers

- Breeders/Dealers
- Transporters
- Birds
- Exhibitors
- Horse Protection
- Research

Regulatory staff

- 47 Veterinarians
- 51 Animal Care Inspectors
- 11 Supervisory specialists

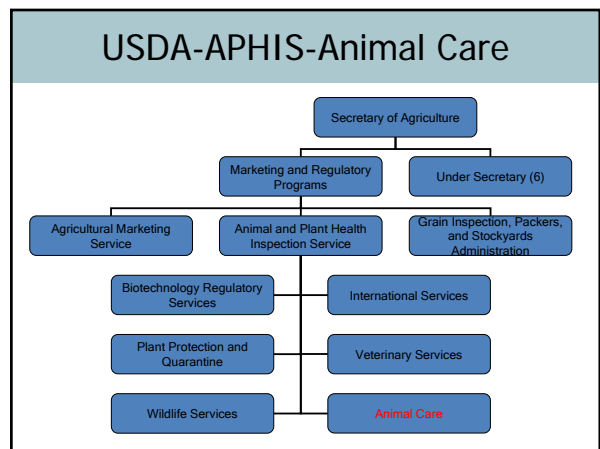
Emergency Staff

- 4 Veterinarians



Western Region Eastern Region

Deputy Administrator – Dr. Chester Gipson

USDA APHIS Animal Care

Our mission is to

- provide leadership in establishing standards of humane care and treatment of animals
- achieve compliance with those standards through inspections, education and cooperative efforts
- ensure the safety and well-being of animals affected by disasters

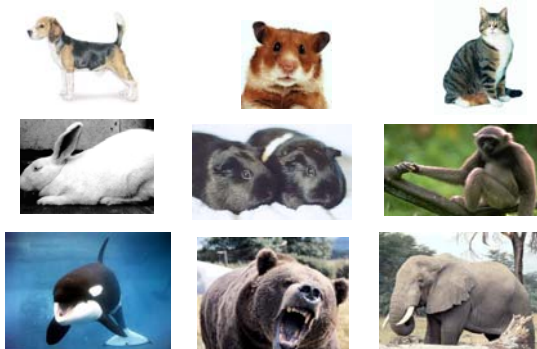


Animal Welfare Act

- To insure that humane care and treatment for animals intended for
 - use in research facilities
 - exhibition
 - use as pets
- To assure the humane treatment of animals during transportation in commerce
- To protect the owners of animals from the theft of their animals by preventing the sale or use of animals which have been stolen.



Animals Regulated Under the AWA



AWA Field Activities

regulated facilities - >9500

- Dealers
- Exhibitors
- Research Facilities
- Transporter



2008 inspections - >15,000

Horse Protection Act

- Prohibits
 - owners and trainers from showing, exhibiting, or selling sore horses
 - drivers from transporting sore horses to compete in shows



National Response Framework

Language is included in the **ESF 6** and **ESF 11** Annexes to ensure the safety and well-being of **Household Pets**



NRF: Pet animal responsibilities

- ESF#11: Safety and well-being of pets
 - Assigned to USDA APHIS Animal Care
 - Coordination of 6, 8, 9, 14 and 15 pet issues
- ESF#6: Mass Care- include pets (FEMA)
- ESF#8: Veterinary medical support (via ESF#11)
- ESF#9: Coordination of ASAR with SAR
- ESF#14: Include animal issues in recovery

Animal Care Emergency Programs Vision

- A nation working together to protect the public through ensuring the safety and well-being of animals during disasters.
- Advocate for animal safety and well-being, which improves the safety and well-being for people.

Animal Care Emergency Programs Mission

1. **Provide national leadership** on the safety and well-being of pets during disasters.
2. **Promote effective planning** at the local, state, tribal and national level.
3. **Deliver training** in the management of pets during disasters.
4. **Mobilize highly trained AC personnel** to provide technical assistance, resource management, and response.
5. **Provide contingency planning guidance** to facilities regulated under the AWA.
6. Provide animal welfare technical assistance to APHIS for **foreign animal disease planning and response**.

“Why” is not a subjective opinion.....

Zogby International Poll: 2005

- 49% of all adults would refuse to evacuate if they could not take their pets (59% own pets)
- 61% of pet owners stated they would might not evacuate (compared to 24% of non-pet owners)
- **SO.....**
 - It's first about public safety!
 - It's also about public health and animal welfare



From Zogby International, Oct 14, 2005

PETS Act and PKEMRA

- **PETS Act:** Pet Evacuation and Transportation Standards Act of 2006
 - State and local plans
 - Stafford act cost sharing
- **Post Katrina Emergency Management Reform Act**
 - FEMA authority to set standards for plans related to pets and authority to use Federal resources in support of pet response.

Federal Agencies with Pet Resources



FEMA



Non-Governmental Partners

- **National Alliance of State Animal and Agricultural Emergency Programs (NASAAEP)**
- American Veterinary Medical Association
- US Animal Health Association
- NARSC: National Animal Rescue and Sheltering Coalition
- National Voluntary Organizations Active in Disaster (NVOAD)
- Private Foundations
- Animal industry



State and Local authorities for pets

- Local authorities:
 - Animal control agencies/law enforcement
 - Public health
 - Emergency management (default)
- State authorities
 - Chief animal health official
 - Public health
 - Emergency management
- SART programs – not authority, multi-agency partnership



State/local missions

- Evacuation/sheltering
 - Transportation of pets with people
 - Collocated/other sheltering
 - Shelter-in-place support
 - Reunion
- Animal control and stray management
- Search and rescue
 - Support of SAR for people
 - Technical rescue (flood, ice, rope, etc.)



State/local missions (cont)

- Veterinary medical care
 - Triage & clinical care
 - Biological risk management
 - Zoonoses
 - Animal disease threats
 - Public health support
 - Euthanasia
- Animal decontamination



Under ESF#11, AC will...

- Assist states with planning and exercises
- Provide technical support and subject-matter expertise to Federal agencies and States
- Conduct critical needs assessments
- Ensure an integrated response with other ESFs
- Expedite requests for assistance



...to help ensure the safety and well-being of people with household pets and of those pets



Response Activities after Katrina

Katrina-2005 Actions:

- Response-Rescue activities
 - Sea Lion and Dolphins in the Gulf
 - Genetically modified research mice in a flooded facility
- AW consultations at pet rescue shelters in LA & MS



Past Emergency Management Activities

- California Wildfires – 2008
- IA/IL spring flooding – 5/2008
- Planning Activities at the JFO in Baton Rouge, LA - 6/2008
- NASAAEP Summit – 6/2008
- Hurricane Gustav/Ike - 9/2008

United States Department of Agriculture
Animal and Plant Health Inspection Service

Transportation Evaluations



United States Department of Agriculture
Animal and Plant Health Inspection Service

Exercise support

Emergency Exercise
June 28, 2008
Baton Rouge, LA

- Transportation guidelines
 - Ventilation needs
 - CO2 evaluations
 - Thermography
- Test registration protocols
 - Pets and owners



Emergency Technical Assistance AWA Regulated Facilities



- ▶ Animal husbandry expertise
- ▶ Assessments at regulated facilities
- ▶ Assistance with contingency planning



Projects under AC Emergency Programs

- Planning and training support for states
- Best practices guides and technical bulletins
 - Sheltering, transport, decontamination, search & rescue
- National resource guide and contacts
- Incident management assistance
- Retrospective statistical analysis
- Equipment caches for training and response
- Animal welfare considerations in FAD response

NASAAEP partnership



2008 National Summit on Companion Animal
Emergency Management, Baltimore, MD



Key Animal Care Contacts for Emergency Issues



Allan Hogue (Riverdale, MD)
Associate Deputy Administrator

Jeanie Lin (Riverdale, MD)
National Emergency Program
Manager

Kevin Dennison (Ft. Collins, CO)
Emergency Program Manager

Kay Carter-Corker (Raleigh, NC)
Emergency Program Manager



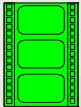
3 Rules of Thumb for Emergencies



1. Don't become a
victim



2. Expect the unexpected



3. Communication
ALWAYS
Fails



Contact Information

Kay A. Carter-Corker, DVM

USDA APHIS Animal Care,
Eastern Region
Emergency Program Manager
920 Main Campus Drive,
Suite 200
Raleigh, NC 27606

kay.a.cartercorker@aphis.usda.gov
919-855-7097 office
919-523-0332 cellular

Kevin M. Dennison, DVM

USDA APHIS Animal Care,
Western Region
Emergency Program Manager
2150 Centre Ave.
Bldg. B, Mail Stop #3W11
Fort Collins, CO 80526-8117

kevin.m.dennison@aphis.usda.gov
970-494-7478 office
970-472-9558 cellular



Questions

